

BPC Sewershed Package 5 Pipe Burst & Open Cut Project (CO-00560)

Rachel Hoffmeyer, P.E.

Public Works and SSO Reduction

Janie Powell

Contract Administrator

Marisol V. Robles

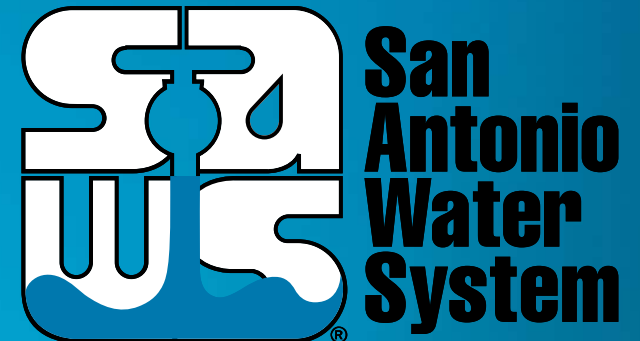
SMWVB Program Manager

Julian P. Bielawski, P.E.

Weston Solutions, Inc.

Bryan J. Spina, P.E.

Ardurra Group, Inc.



Non- Mandatory Pre-Bid Meeting

June 3, 2022

MAKING SAN ANTONIO
WATERFUL



WebEx Reminders

- Stay muted during the entire presentation.
- Sign-In using the chat
 - Name, Company, Email Address
- Ask questions at any time during the presentation utilizing the Chat. Questions will be addressed at the end of the presentation.
 - Ensure to direct your questions to the entire group by selecting everyone from the drop down.
 - All formal responses to questions will be provided via an Addendum.
- Audio only attendees may follow along on the presentation posted to the SAWWS solicitation website.

Oral Statements

Oral statements or discussion during the pre-bid meeting today will not be binding, nor will it change or affect the terms or conditions within the Plans and Specifications of this Project. Changes, if any, will be addressed in writing only via an Addendum.

Agenda

- General Information
- SMWB Requirements
- Contract Solicitation Website
- Vendor Registration & Notification (VRN)
- Solicitation Schedule
- Contract Requirements
- Bid Packet Preparation
- Bid Opening Procedures
- Addenda
- Key Reminders
- Contact Information
- Project Overview
- Project Details
- Questions

General Information

- This is a Non-Mandatory pre-bid meeting
- This presentation has been posted and the attendance sheet will be posted, at the end of this meeting, to the SAWS website
- Construction services being procured through low bid under Chapter 2269 of the Texas Government Code
- An Environmental and Cultural Resources Report is available on the SAWS website and accessible once a disclaimer form is signed
- Key Project Information:
 - Estimated Budget: \$3,587,399.00
 - Calendar Duration: 330 days

Aspirational SMWB Goal

Industry	Aspirational SMWB Goal
Construction	20%

The aspirational SMWB goal is 20% of your total bid price

Minimum Qualifications for SMWB recognition:

- South Central Texas Regional Certification Agency
 - Must be SBE-Certified (including MBEs and WBEs)
 - Texas Historically Underutilized Business “HUB” Program
- Local Office or Local Equipment Yard
 - Atascosa, Bandera, Bexar, Comal, Frio, Guadalupe, Kendall, Kerr, McMullen, Medina, Uvalde and Wilson

Good Faith Effort Plan (GFEP) FAQs

- **Q: Is the 20% SMWB goal mandatory?**

A: No, but we ask prime contractors to do their best with good faith outreach efforts. If the goal is not met, proof of outreach efforts is required with the submittal.

- **Q: What if I am having trouble finding SMWB subcontractors?**

A: The SCTRCA has a search portal at www.sctrca.sctrca.org. Please make sure to include SAWS-specific parameters in your search. Contact Marisol Robles at Marisol.Robles@saws.org if assistance is needed.

- **Q: What if my business is SMWB-certified? Do I need to find SMWB subs?**

A: If your firm is SMWB-certified, you will most likely meet the goal. However, the GFEP is a required document, and a good faith outreach effort is still necessary.

- **Q: Do I need to include all my subcontractors in the GFEP or just those that qualify towards the SMWB goal?**

A: All subcontractors need to be included in the GFEP, even those that may not count towards the SMWB goal.

- **Q: What if I have questions about the GFEP?**

A: Please contact the SMWB Program Manager at 210-233-3420, or at Marisol.Robles@saws.org. GFEP questions can be asked at any time before the submittal is due.

Post Award: Subcontractor Payment & Utilization Reporting (S.P.U.R.) System

1. Subcontractor & Supplier Payment Tracking
2. Subcontractor and Supplier Additions or Substitutions
3. Must be Current and Accurate before Retainage is released

<https://saws.smwbe.com>

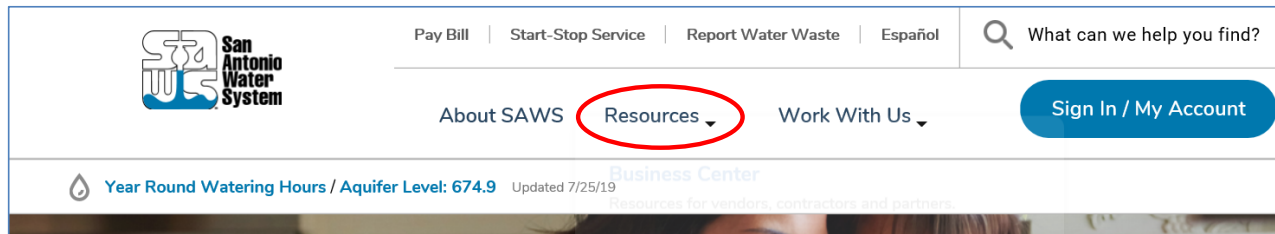


BPC Sewershed Package 5 Pipe Burst & Open Cut Project

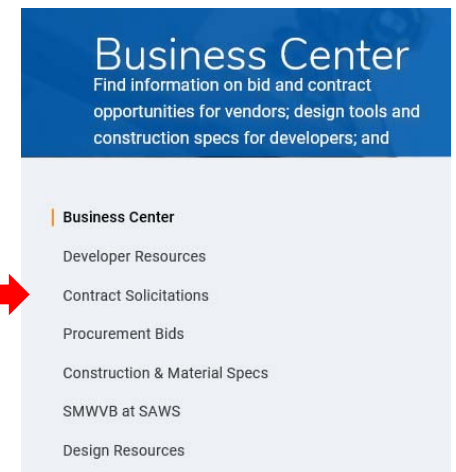


Contract Solicitations Website

- To locate the Contract Solicitations, go to the SAWS website at www.saws.org, click on the drop-down menu for Resources and select Business Center



- At the left-hand menu choose Contract Solicitations



Contract Solicitations Website

- Choose the specific project
- The following buttons are located under the advertisement:
 - *Notify Me - Subscribe
 - Plan Holder's List – View List
 - Downloads
 - Specifications
 - Plans
 - Addendums
 - Engineering Reports



The screenshot displays a project advertisement for a "Non-Mandatory Pre-Bid Meeting" on August 6, 2019, at 10:00 AM. The meeting location is the San Antonio Water System Customer Service Building. Below the advertisement, there are three main sections: "Notify Me" with a "Subscribe" button, "Plan Holders List" with a "View List" button, and "Downloads" which includes links for "Specifications" and "Plans" (both dated Jul. 31, 2019). A note indicates that users must be logged in to access these documents. PDF icons are visible next to the download links.

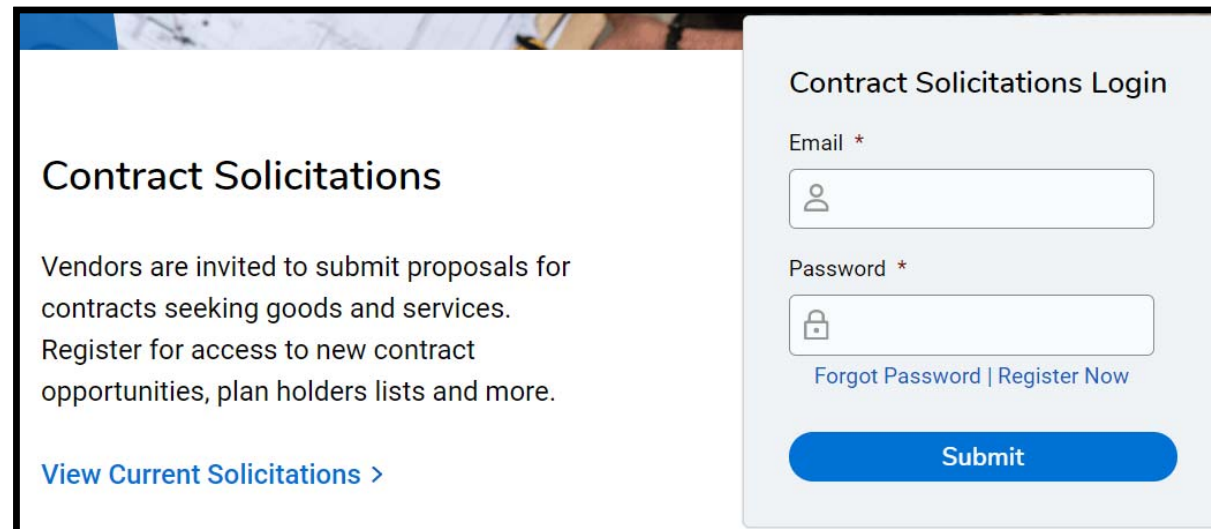
* To receive updates on specific projects, registered vendors must 'Subscribe' to the project by selecting the project, and clicking 'Subscribe' under the Notify Me box

BPC Sewershed Package 5 Pipe Burst & Open Cut Project



Vendor Registration & Notification (VRN)

- Please register through SAWS Vendor Registration Program on the SAWS website at [Business Center - San Antonio Water System \(saws.org\)](https://www.saws.org) to ensure access to the latest information.



Contract Solicitations

Vendors are invited to submit proposals for contracts seeking goods and services. Register for access to new contract opportunities, plan holders lists and more.

[View Current Solicitations >](#)

Contract Solicitations Login

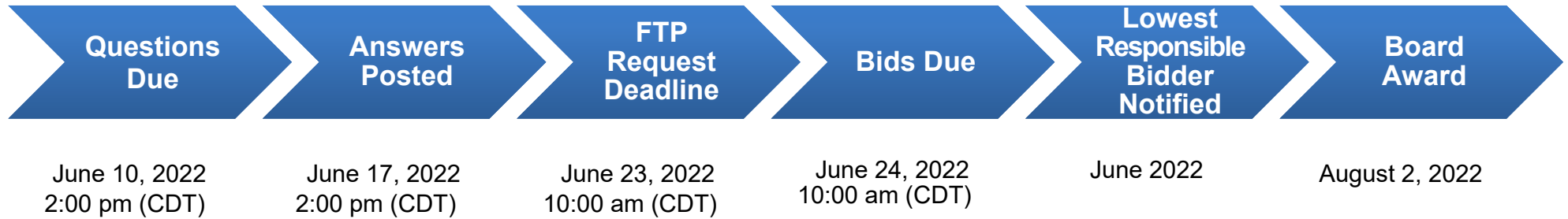
Email *

Password *

[Forgot Password | Register Now](#)

Submit

Solicitation Schedule



BPC Sewershed Package 5 Pipe Burst & Open Cut Project



Contract Requirements

Prevailing Wage Rate and Labor Standards – Section 2.10 of the General Conditions

- Wage decisions are included within the specifications
- Contractors to utilize LCP Tracker
- Certified payroll to be submitted on weekly basis beginning on the start date indicated on the Notice to Proceed
- Contractors are responsible for sub-contractor payroll
- Late payrolls delay contractor payments, as well as release of retainage at the end of the project
- Payroll records are subject to review
- Site visits are random and unannounced
- Interviews will be conducted and will be private & confidential
- All apprenticeship programs will need to be approved by Department of Labor prior to starting

Contract Requirements

- Insurance requirements are found in Section 5.7 of the GCs
Supplemental Conditions
 - **Installation Floater** coverage required in lieu of Builder's Risk
- Maintain insurance coverage during the construction of this Project
- Compliant prior to executing the contract
- Will ask for insurance prior to Board award to expedite execution of the contract
 - Any deficiencies must be corrected prior to Board award

Contract Requirements

Supplemental Conditions (Continued)

- Contractor shall perform the work with its own organization on at least 40% of the total original contract price which should be indicated on the Good Faith Effort Plan.

Prime Contractor's Percentage of Participation: (Ex: 100% is the total value of the contract.) _____ %

- Liquidated damages will be assessed at \$1,471.14 per day

Bid Packet Preparation

- Only limited items are required with the initial bid packet
 - List of Bid Items
 - Bid Packet Checklist
 - Signed Bid Proposal Signature Page with
 - Acknowledgement of all Addenda
 - Executive Order
 - Signed Proposal Certification
 - Bid Bond
 - Good Faith Effort Plan

Bid Packet Preparation

Apparent Low Bidder

- Notified by SAWS within 24 hours of Bid Opening to provide the following within one (1) business day
 - Conflict of Interest Questionnaire - Form CIQ (Rev. 1/1/2021)
 - Proof of Insurability
 - Company Information Packet
 - Statement regarding ability to complete the project
 - W-9
 - Detailed Baseline Schedule
 - Bid Bond*
- *And, if bid was submitted electronically without a Bid Bond:
- Cashier's Check or Certified Check

Bid Packet Preparation

Apparent Low Bidder (Continued)

- To provide the following within one (1) business day of bid opening
 - Statement of Bidder's Experience Form
 - Projects to have been completed by the Bidder or subcontractor.
 - Projects must have been completed within 2016-2021
 - Record of performance on three (3) similar projects
 - A-1 Minimum of 1,000 LF by Pipe Bursting 8" sewer mains or larger
 - A-2 Minimum of 1,000 LF by Open Cut for 8" or larger sewer mains
 - A-3 Installation of a bypass pumping system for large diameter sanitary sewer (24-inches and larger)
 - Ensure all project reference contact information provided is current and valid prior to submitting.

Bid Packet Preparation

- Utilize the Bid Packet Checklist within the specifications
- Double check all mathematical calculations and verify all extensions
- Addendums are acknowledged on the Bid Proposal
 - Check the SAWS website regularly for addendum postings
 - It is possible to have multiple addendums

Bid Packet Preparation

- Pay close attention to the Mobilization and Preparation of ROW line items on the Bid Proposal as they are broken down by site/location
- Bidders must also provide combines the cost of the sites/locations and enter a subtotal for Mobilization and Preparation of ROW (all sites combined)
- Ensure Mobilization & Prep ROW do not exceed the percentages allowed once subtotaled
- When preparing the bid tab, SAWS will verify both the subtotals and total of site/location line items. If there is a discrepancy the subtotal provided by the Bidder will take precedence to correct the bid.

Bid Opening Procedures

- Bids will be submitted using SAWS' electronic bid opening procedures
- SAWS encourages and prefers the submission of electronic bids using its secure FTP site.
 - Bidders should submit a request via email to obtain access to the site no later than 24 hours before the bid opening.
- Or, Bidders may drop off a hard copy bid. Only required items.
 - Drop box is located at 2800 US Hwy 281 N, Customer Service Tower
 - Enter the first set of glass double doors
 - Insert into the black drop box on the wall on the left-hand side
- Late bids will not be accepted and will be returned unopened.
- Bid Opening will be handled via WebEx only; link found in IFB

Addenda

- Known Addenda will include:
 - Response to questions
 - Change to Plans and Specifications
 - C-42 Site: Plan sheet and line items will be revised to require 30” pipe bursting to replace existing 27” RCP sewer
 - Menarby Ct Site: Plan sheet will be revised to indicate existing sewer main within TXDOT ROW not under pavement to be removed. Removal will be subsidiary to the Preparation of Right-of-Way for that site.
 - San Pedro Ave Site: SC8 to include provision that work at this site cannot occur from November 19, 2022 through November 24, 2022 per Right-of-Entry agreement

Key Reminders

- All questions should be sent in writing to the corresponding Contract Administrator by email Janie.Powell@saws.org or fax, 210-233-5351.
- Please identify the project by its associated solicitation number. (CO-00560)

Contact Information

<u>Contact Name</u>	<u>Title</u>	<u>Telephone Number</u>	<u>Email address</u>
Janie M. Powell	Contract Administrator	210-233-2443	Janie.Powell@saws.org
Marisol V. Robles	SMWVB Program Manager	210-233-3420	Marisol.Robles@saws.org

REMINDER

Please be advised that Bidders are prohibited from communicating with any other SAWS staff, the Consultant, the Developer, or City of San Antonio officials regarding this IFB up until the contract is awarded as outlined in the Instructions to Bidders

Project Overview

Project locations:

- Plan Set 1 - 12 sites
- Plan Set 2 - 5 sites

Pipe Bursting:

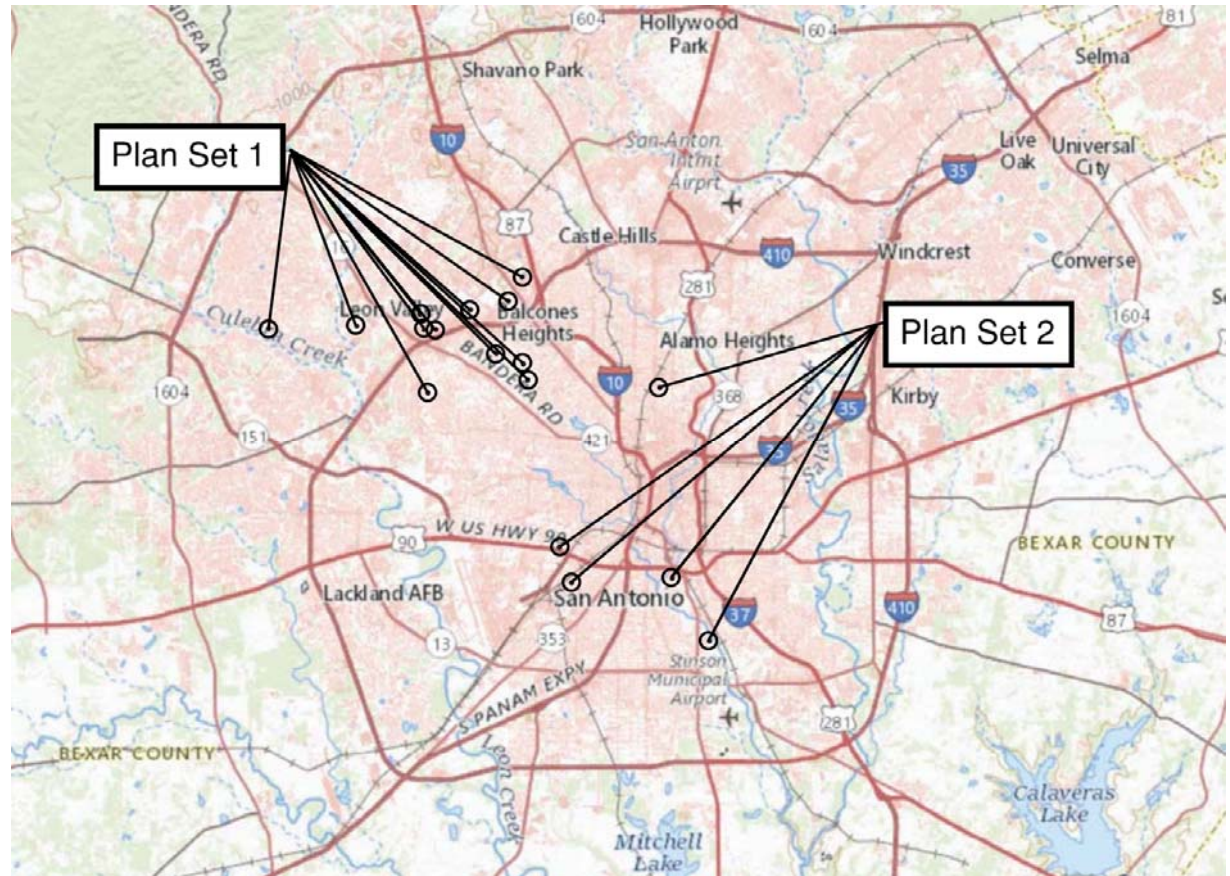
- 8" – 3,094 LF
- 10" – 286 LF
- 27" – 579 LF

Open-Cut:

- 8" – 1,277 LF
- 10" – 118 LF

Abandonment:

- 6" – 610 LF
- 8" – 574 LF
- 10" – 59 LF
- 10" – 614 LF



Project Overview

Special Conditions

Project Schedule Requirements:

- Construction Period: 330 days.
- A maximum of two (2) pipe bursting sites, two (2) open cut sites, and one (1) abandonment site shall be permitted to be open simultaneously until substantial completion is achieved.
- There are two Plan Sets included for this project. Plan Set 1 includes 12 sites and Plan Set 2 includes 5 sites. Contractor is allowed to work across plan sets and is not required to complete either plan set in its entirety before moving to the other.
- Contractor is required to prioritize the following 3 sites and is required to complete them by December 15, 2022: C-4, C-17, and San Pedro Ave.
- All sites except for Hansford St., E. Pyron Ave., and Menarby Ct. have a remedial measures deadline of July 23, 2023 associated with SAWS consent decree with the EPA. Contractor shall prioritize the sites with these remedial measures deadline and have these sites substantially completed by the July 1, 2023.

Project Overview

Special Conditions

CPS Allowance:

- Contractor to begin coordination immediately after Notice to Proceed is provided by SAWS to avoid construction delay. Payment for utility pole bracing will be made up to the allowance included in the bid, and utility poles potentially needing bracing have been identified on the plans.

Floodplain Protection:

- SAWS will provide floodplain permit to the contractor (sites: C16, C-18, C-24, C-42, E.Pyron, & Menarby Ct.). Contractor shall adhere to the permit requirements and is advised to proceed with caution when working near these areas during rain events.

CoSA Coordination:

- Contractor shall obtain ROW permit and conform to CoSA permit requirements while performing construction activities.

Project Overview

Special Conditions

TXDOT:

- Contractor shall coordinate with SAWS in acquiring TXDOT permit and comply with TXDOT requirements during construction. (sites: CI8 & Menarby Ct.)

UPRR/RAILPROS:

- Contractor shall comply with all requirements of the executed agreements with UPRR while performing construction activities. (sites: Hansford St., E. Pyron Ave., Menarby Ct, San Pedro Ave., and W. Malone Ave.)

Construction Right-Of-Entry:

- All sites require Construction Right-Of-Entry (ROE) for access and/or additional work area. Contractor shall coordinate with SAWS on Construction ROEs and schedule project activities and site preferences accordingly. ROE requirements are identified in the ROE Agreements.

Project Overview

Special Provisions to Technical Specifications

100&101 Mobilization, Prep ROW:

- All sites mobilization and Prep ROW payments shall be lump sum per each project site.

900 PB Restoration:

- All site restoration associated with pipe installation shall be considered incidental to the cost of PB unless specified otherwise.

910 Rehabilitation of manholes:

- Standard manhole rehabilitation shall be paid for the vertical feet. Larger diameter manhole rehabilitation shall be paid for the square feet.

862 Abandonment of sewer main & manholes:

- Grouting of abandoned sewer lines shall be measured by the linear foot of abandoned sewer main.
- Unless otherwise shown in the contract documents, abandonment/grouting of manholes will not be a separate pay item.

Project Overview

Special Provisions to Technical Specifications

849 Sanitary Sewer Acceptance Testing

- No direct payment shall be made for Air/Infiltration/Exfiltration, and Deflection Testing and all costs in connection there with shall be included in the applicable contract price for the item to which work the pertains.

530 Barricades, signs & Traffic Handling

- Unless itemized in the Bid Proposal Form, work performed shall be considered subsidiary to the pipe rehabilitation work.

Erosion & Sedimentation Control:

- Work performed and materials furnished shall be considered subsidiary to pipe rehabilitation work.

Project Overview

Special Specifications

3300 Sanitary Sewer Private Lateral

- To be used for private lateral reroutes – Site C-40 OC

600I Portable Changeable Message Sign

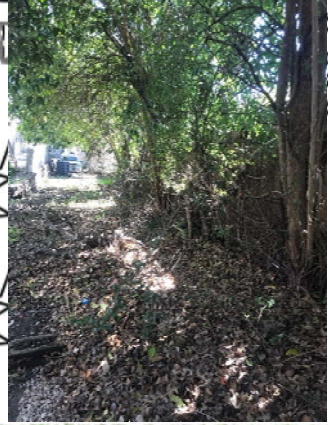
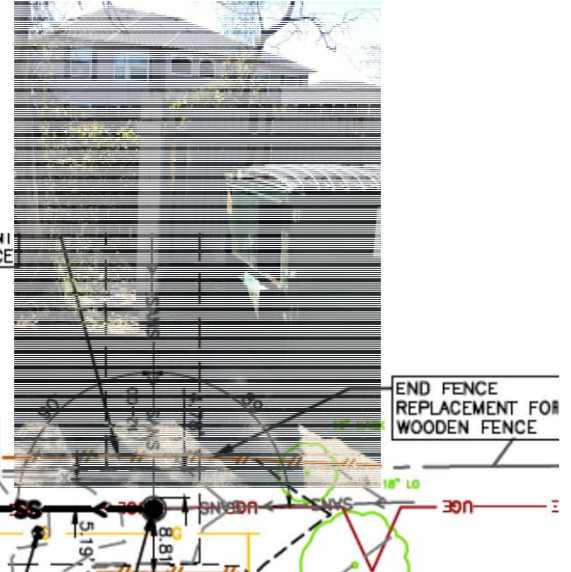
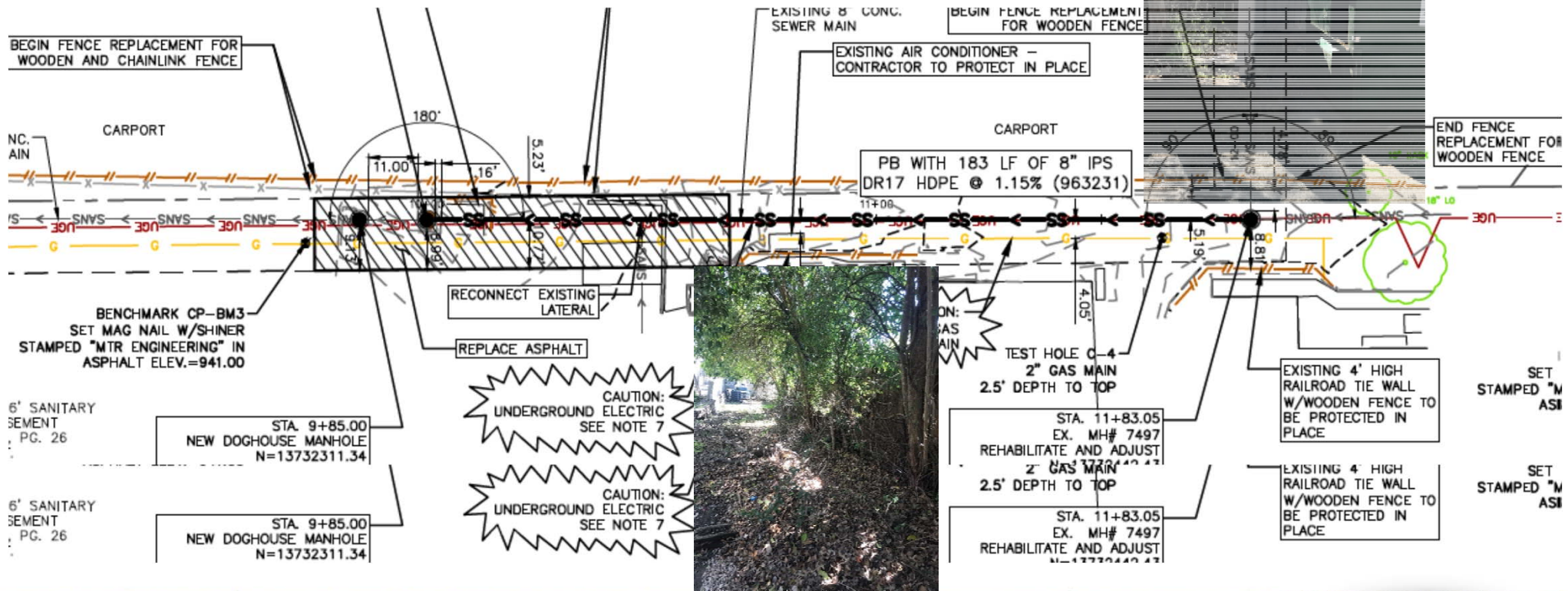
- To be used for traffic control – Sites C-18 & C-24

BPC Sewershed Package 5 Pipe Burst & Open Cut Project



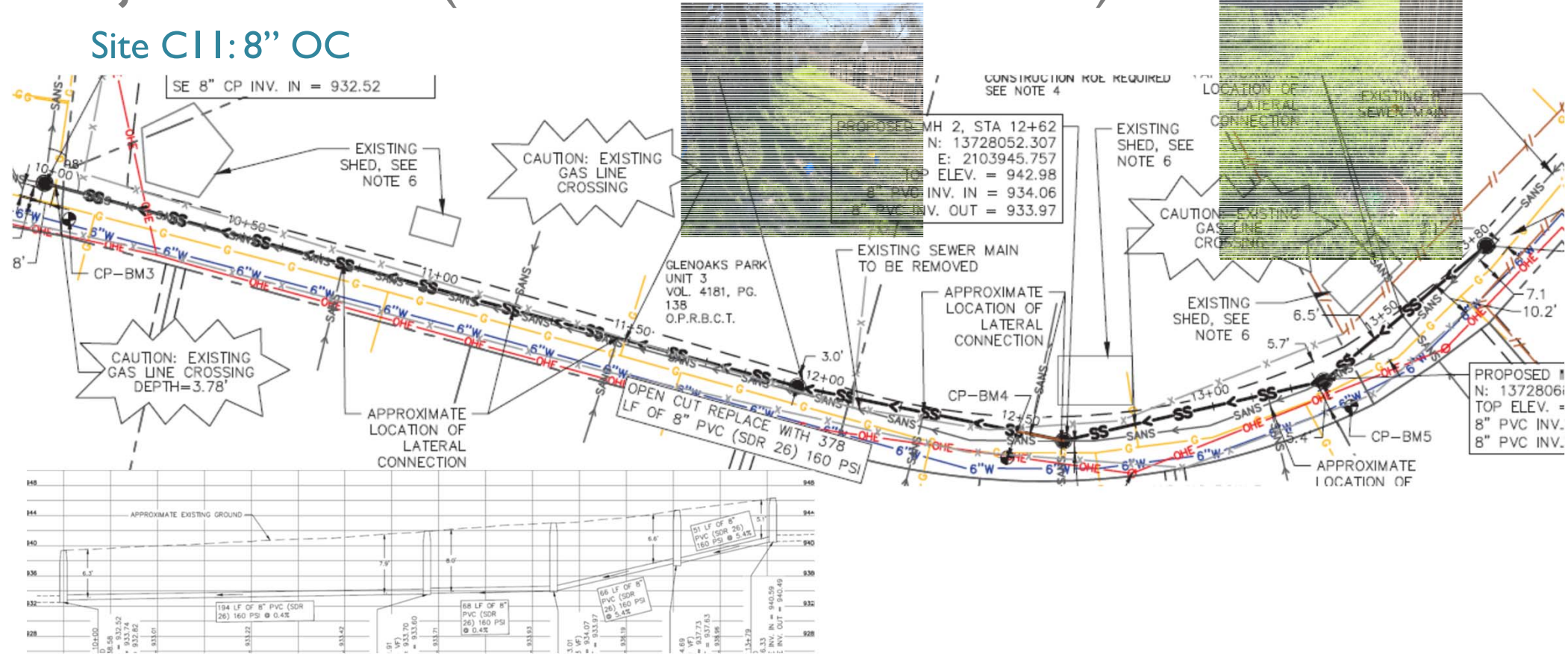
Project Details (Plan Set I Notable Sites):

Site C4: 8" PB Per Project Schedule Requirements, contractor is required to prioritize this site and complete by December 15, 2022



Project Details (Plan Set I Notable Sites):

Site CII: 8" OC



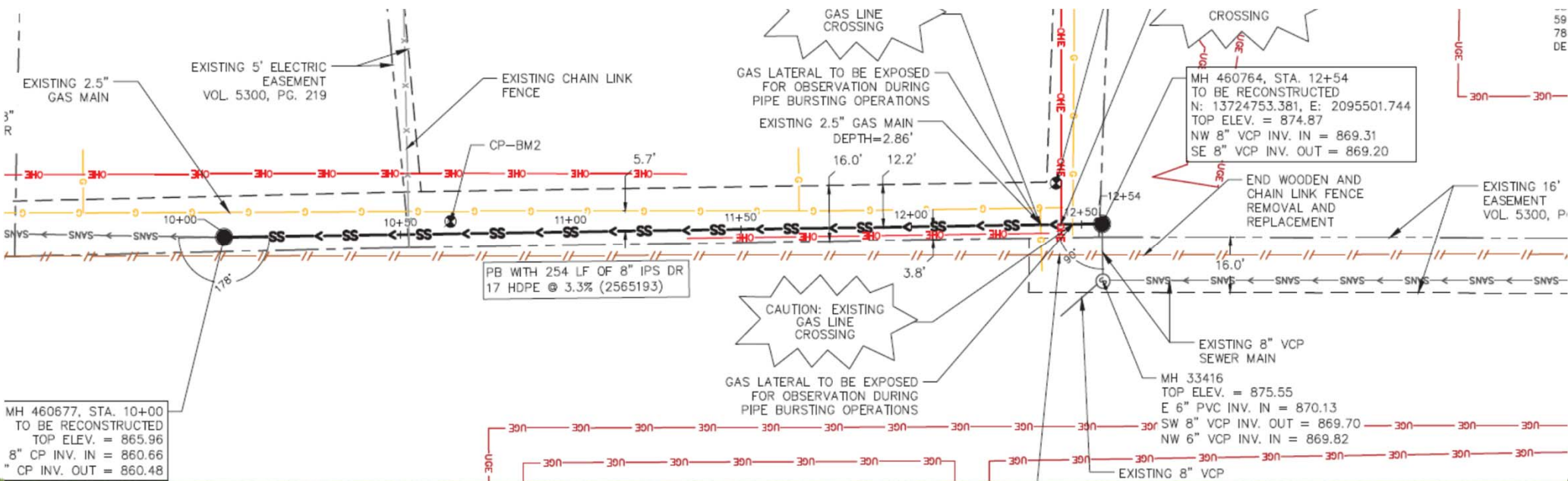
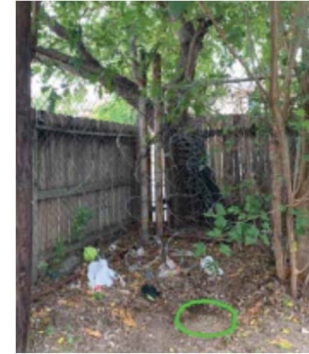
BPC Sewershed Package 5 Pipe Burst & Open Cut Project



Project Details (Plan Set I Notable Sites):

Site CI7: 8" PB

Per Project Schedule Requirements, contractor is required to prioritize this site and complete by December 15, 2022

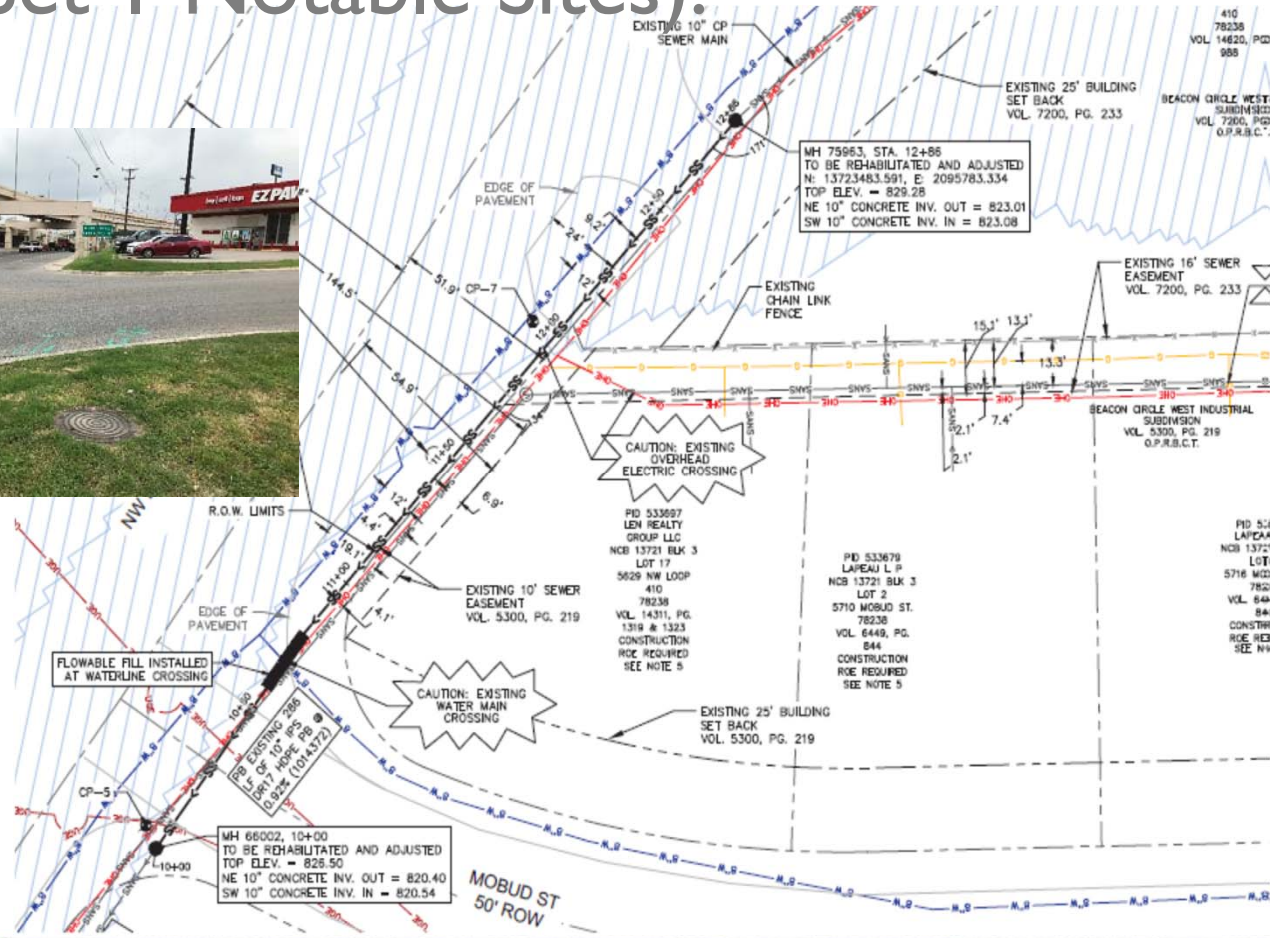


BPC Sewershed Package 5 Pipe Burst & Open Cut Project



Project Details (Plan Set I Notable Sites):

Site C18: 10" PB (410 access Rd)



BPC Sewershed Package 5 Pipe Burst & Open Cut Project



Project Details (Plan Set I Notable Sites):

Site CI8: 8" PB (I410 access Rd)



ES 5 AND 6

EDGE OF PAVEMENT

CAUTION: EXISTING UNDERGROUND ELECTRIC CROSSING

EXISTING 10' SEWER EASEMENT VOL. 5300, PG. 219
EXISTING 16' SEWER EASEMENT VOL. 5300, PG. 219

PB WITH 379 LF OF 8" IPS DR17 HDPE @ 1.82% (2565165)

MOBUD ST 60 ROW



TA. 10+00
NSTRUCTED
96242.268
= 821.91
= 814.80
= 815.80
= 815.98

EXISTING 10' SEWER EASEMENT VOL. 5300, PG. 219

EXISTING 25' BUILDING SET BACK VOL. 5300, PG. 219

PID 533673 FETBOY LP

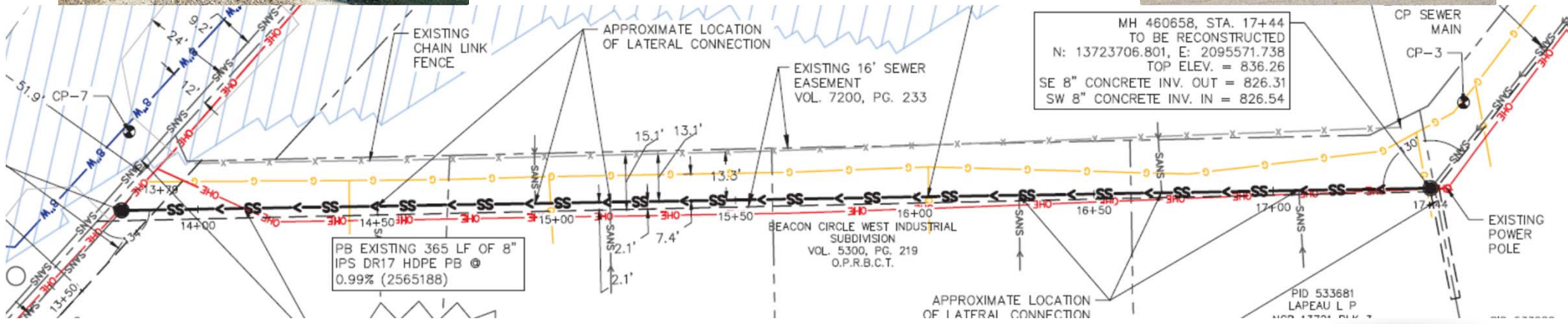
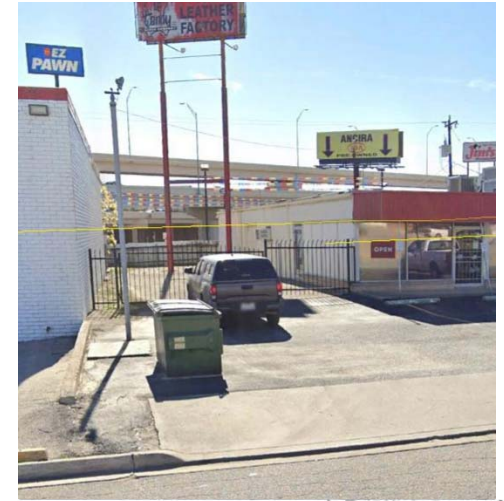
EXISTING 16' SEWER EASEMENT

BPC Sewershed Package 5 Pipe Burst & Open Cut Project



Project Details (Plan Set I Notable Sites):

Site CI8: 8" PB (alley)

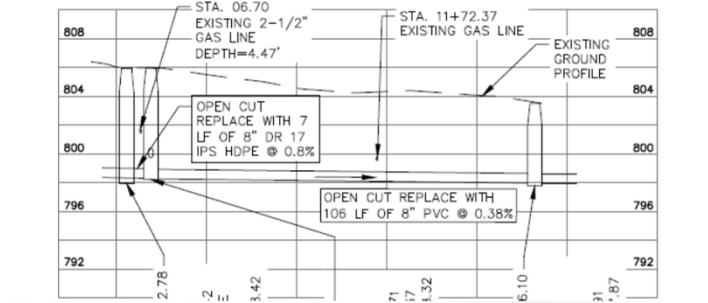
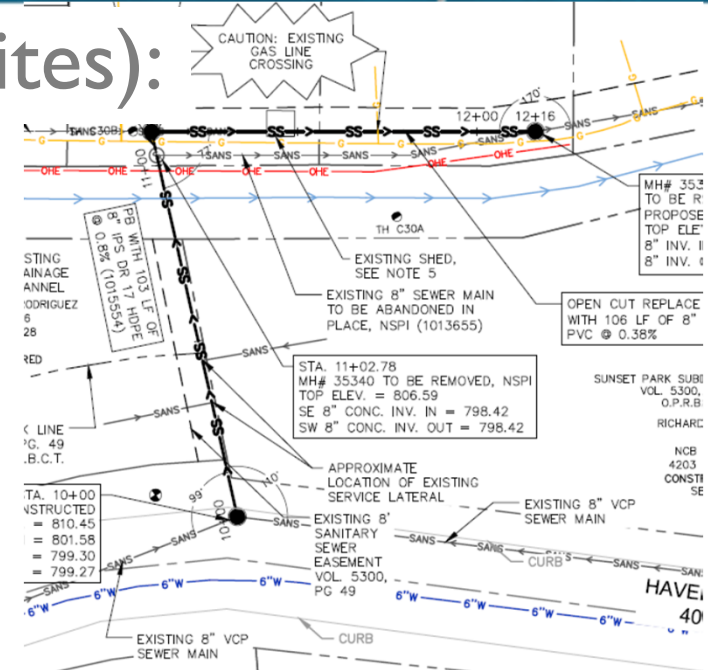


BPC Sewershed Package 5 Pipe Burst & Open Cut Project



Project Details (Plan Set I Notable Sites):

Site C30: 8" PB/OC

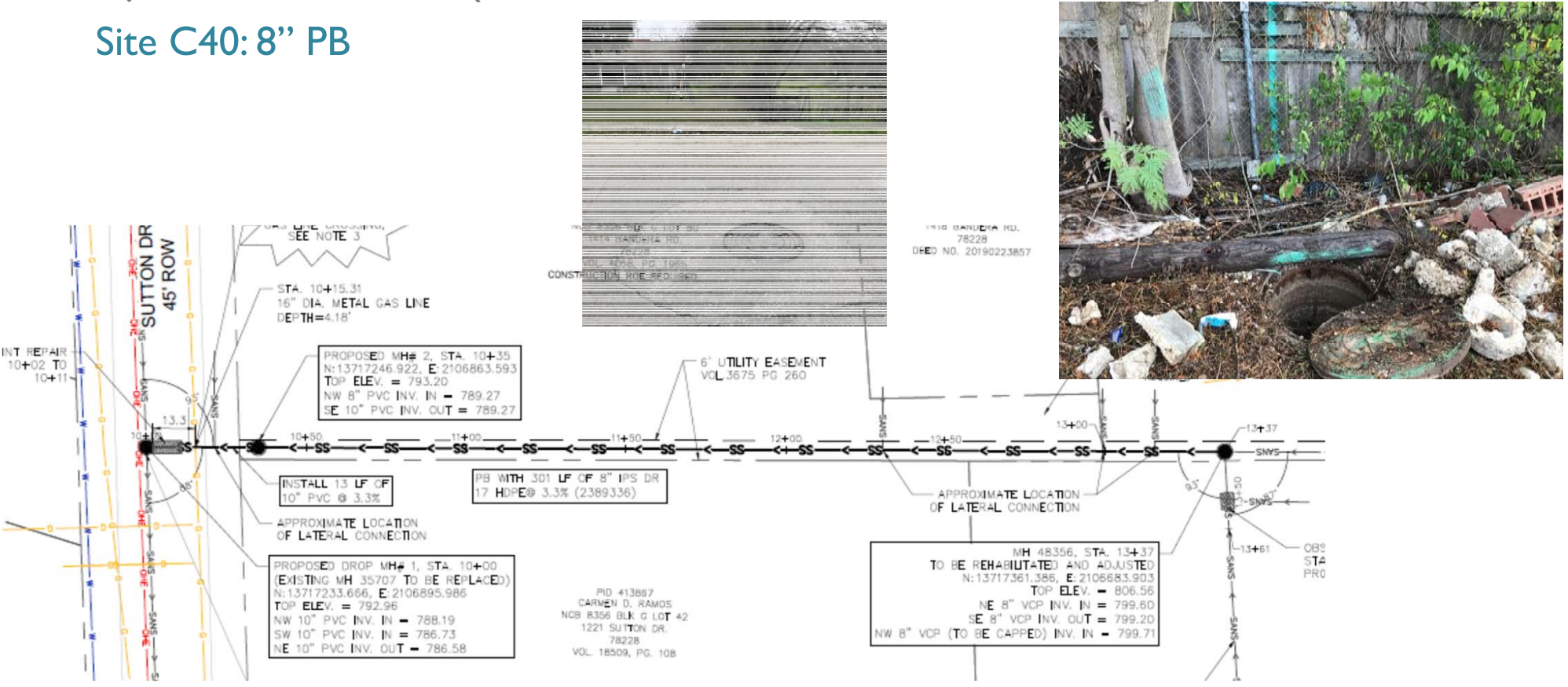


BPC Sewershed Package 5 Pipe Burst & Open Cut Project



Project Details (Plan Set I Notable Sites):

Site C40: 8" PB

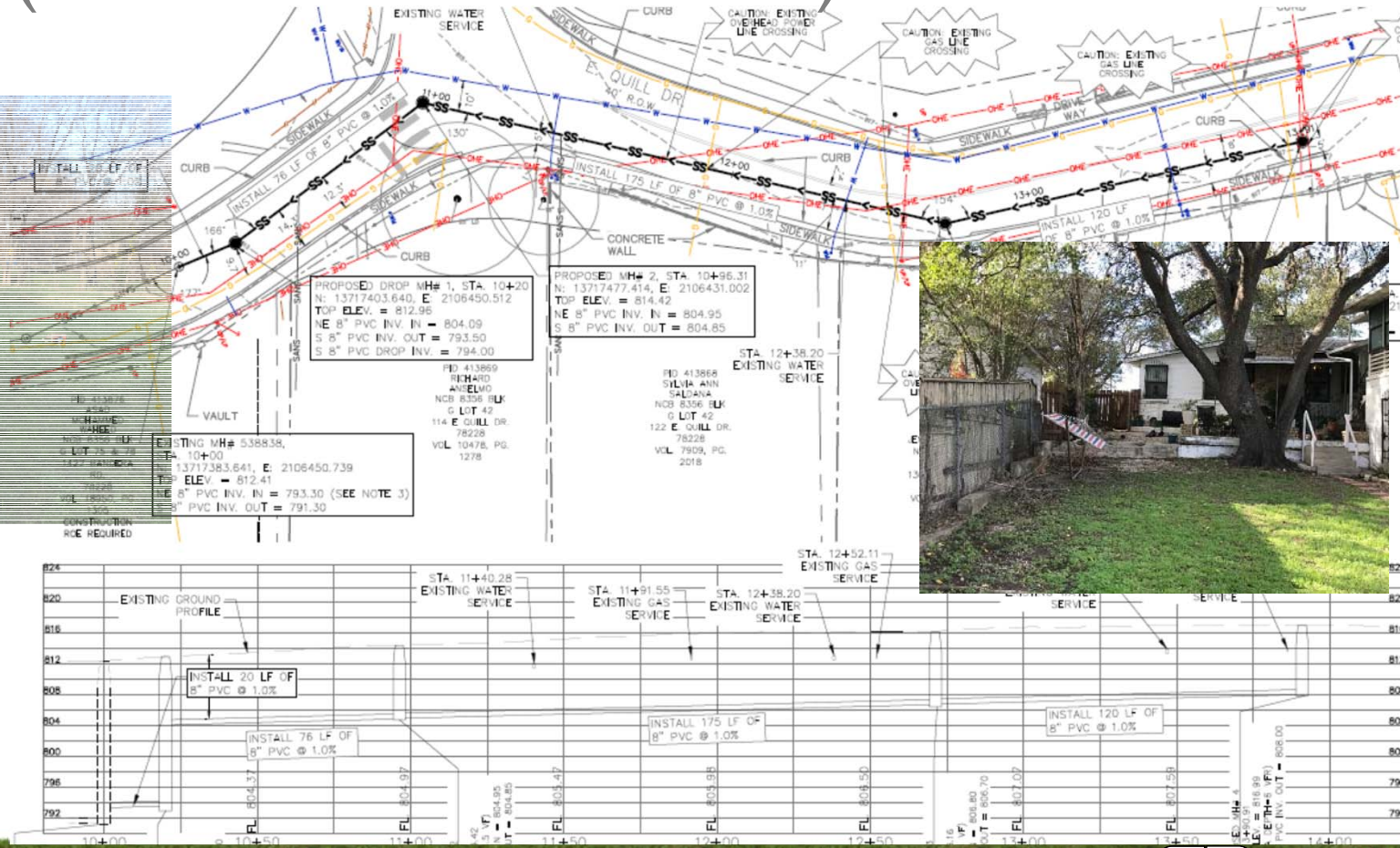
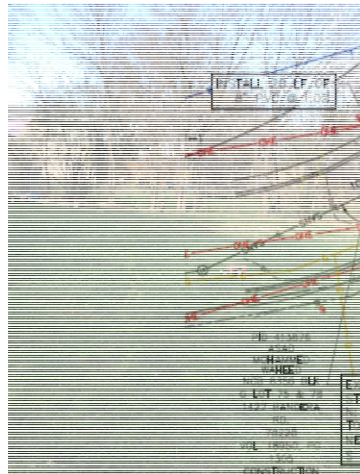


BPC Sewershed Package 5 Pipe Burst & Open Cut Project



Project Details (Plan Set I Notable Sites):

Site C40: 8"OC



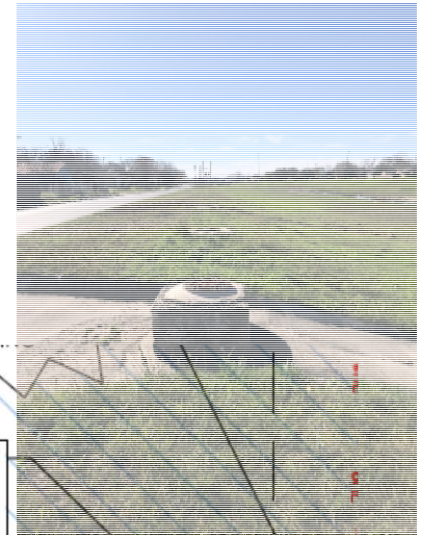
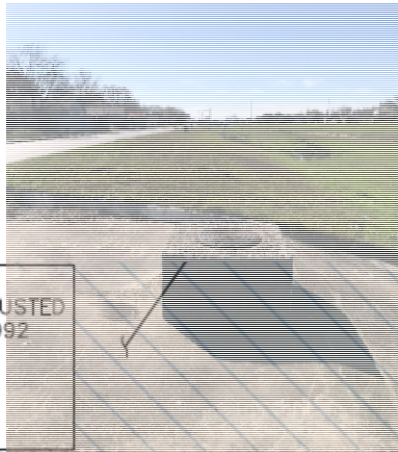
BPC Sewershed Package 5 Pipe Burst & Open Cut Project



Project Details (Plan Set I Notable Sites):

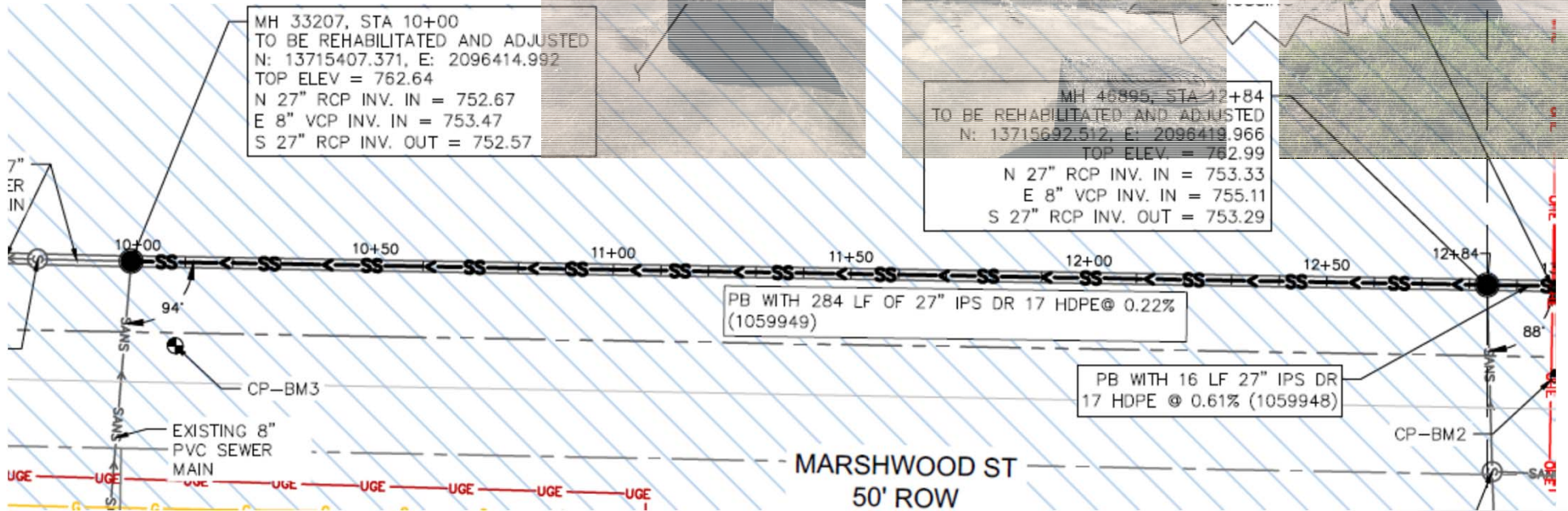
Site C42: 27" PB

Upcoming Addendum: site will require 30" pipe bursting to replace existing 27" RCP sewer



MH 33207, STA 10+00
TO BE REHABILITATED AND ADJUSTED
N: 13715407.371, E: 2096414.992
TOP ELEV = 762.64
N 27" RCP INV. IN = 752.67
E 8" VCP INV. IN = 753.47
S 27" RCP INV. OUT = 752.57

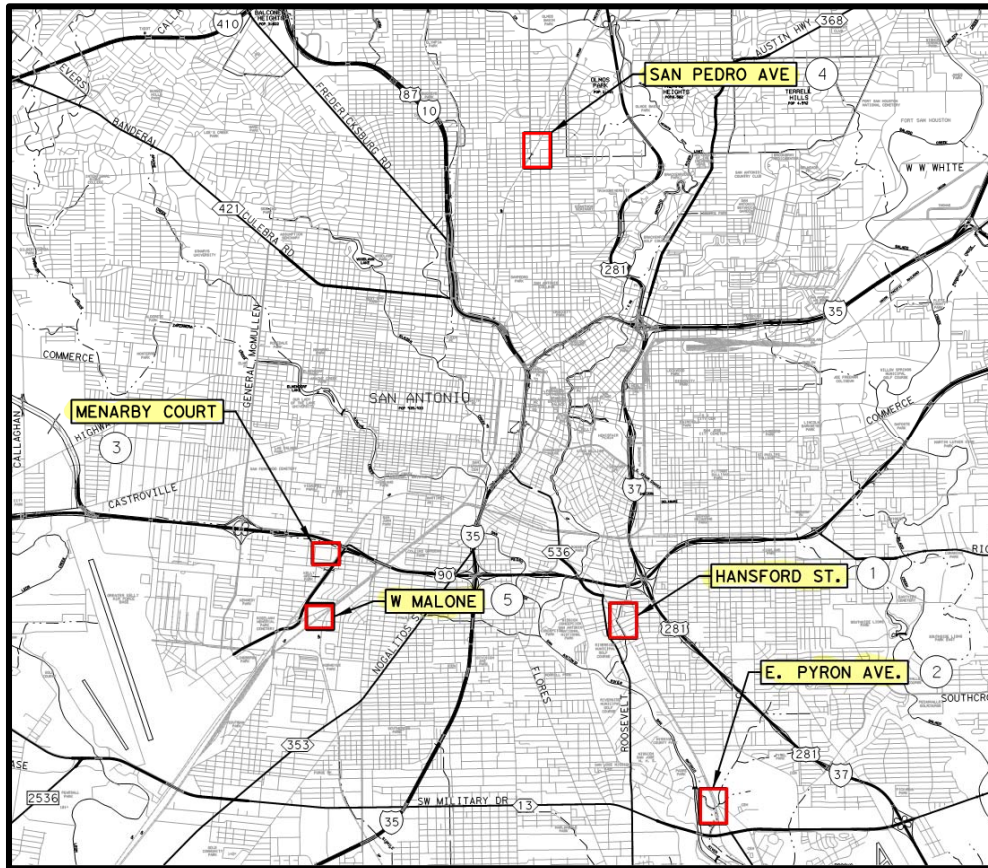
MH 46895, STA 12+84
TO BE REHABILITATED AND ADJUSTED
N: 13715692.512, E: 2096419.966
TOP ELEV = 762.99
N 27" RCP INV. IN = 753.33
E 8" VCP INV. IN = 755.11
S 27" RCP INV. OUT = 753.29



BPC Sewershed Package 5 Pipe Burst & Open Cut Project



Project Details (Plan Set 2 Project Location Map)



HANSFORD ST.	
①	105 LF OF 10" SEWER (COMPKEY 3989689, 3989708)
E. PYRON AVE.	
②	25 LF OF 12" SEWER (COMPKEY 3989710)
MENARBY CT	
③	52 LF OF 8" SEWER (COMPKEY 3989711)
SAN PEDRO AVE.	
④	366 LF OF 6" SEWER (COMPKEY 965297)
W. MALONE	
⑤	325 LF OF 8" SEWER (COMPKEY 972471)

BPC Sewershed Package 5 Pipe Burst & Open Cut Project



Project Details (Plan Set 2 Overview)

Items of Note

- All locations are located near or within Union Pacific Railroad (UPRR) Right-of-Way
- Plan Set 2 consists of five (5) locations to rehabilitate or replace six (6) segments of sewer main.
- The five (5) locations are the Hansford St between UPRR ROW and Naylor St, E Pyron near E Pyron and S Presa St, Menarby Ct between SW 19th St and UPRR ROW, San Pedro Ave, and W Malone Ave between the UPRR tracks.
- Plan Set 2 consists of open cut replacing 482 LF of 8”-10” sewer main and grout abandonment of 1,557 LF of 6”-12” sewer main.
- Contractor shall meet requirements of Union Pacific Railroad (UPRR) Agreement for pipeline crossing and encroachments. Special Condition provides UPRR/RailPros contact information and documentation required before work can begin within UPRR right-of-way.

Project Details

Hansford St Site

- Consists of open cut replacing 105 LF of 10” sewer main. Manholes will be replaced.
- Includes open cut with realignment of sanitary sewer main.
- Suggested Bypass route shall run under UPRR bridge through concrete channel.
- Access to the site will require shutdown of Hansford through traffic control and detours and coordination with the school.
- Contractor shall coordinate with Riverside Park Academy to avoid impacts to school operations as noted in Special Condition SCI4.

Project Details

E. Pyron Ave. Site

- Consists of a proposed doghouse manhole and an 8” sanitary sewer lateral and the abandonment of the existing UPRR crossing and main within UPRR ROW.
- Access to the site is per the Rights-of-Entry to Construct for property 1839 E Pyron which is owned by the National Park Service.
- Contractor shall remove and replace fence as noted in the plans as the fence must meet the National Park Service’s requirements. Materials for the fence will be provided by the National Park Service and San Antonio Missions National Historical Park.
- Coordination with facility management chief shall be required for construction.

Project Details

Menarby Ct Site

- Consists of open cut replacing 52 LF of 8” sewer main and the abandonment of the existing UPRR sewer crossing. Manholes will either be replaced or rehabilitated.
- Access to the site shall require traffic control for shutdown of cul-de-sac.
- Coordination with residents to manage flow in main.
- Based on current Pavement Index, the location will need to be milled and overlaid per the plans.
- A TXDOT permit will be required for grout abandonment of the existing main under General Hudnell along with the removal of the existing sewer main within TXDOT ROW not under pavement. Upcoming Addendum to include removal of the sections of the sewer main noted in the plans will be subsidiary to the Preparation of Right-of-Way for the site.

Project Details

San Pedro Ave Site

- Consists of grout abandonment of 610 LF of 8” sewer main and rehabilitating the downstream manhole.
- Contractor may need to access the upstream manhole using the HEB parking lot. Please note that CPS Energy and HEB have conducted a land swap in the area and HEB will either be in the process of reconstructing or will have finished reconstructing their employee parking lot. Contractor shall take care to protect the newly reconstructed parking lot while accessing the upstream manhole for abandonment.
- CPS Energy is constructing an electrical substation adjacent to the HEB property. The construction of the substation and HEB parking lot may be occurring during this project. Contractor shall coordinate with any other contractors still in the area to avoid damaging any work.
- Per Project Schedule Requirements, contractor is required to prioritize this site and complete by December 15, 2022. Upcoming Addendum to include provision that work at this site cannot occur from November 19 through November 24, 2022 per ROE agreement.

Project Details

W. Malone Site

- Consists of open cut replacing 325 LF of 8” sewer main. Manholes will be replaced.
- The suggested bypass will involve 2 temporary doghouse manholes within UPRR ROW. Both doghouse manholes will need to have their cones and risers removed and the top sealed after completion of bypass pumping.
- Site is located between two separate tracks and UPRR rights-of-way.
- Contractor shall coordinate with UPRR and RailPros to make sure the required flaggers and observers are on-site during work within the UPRR right-of-way.
- Based on current Pavement Index, the location will need to be milled and overlaid per the plans

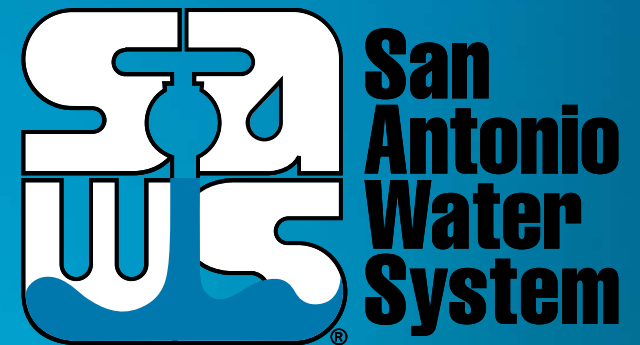
QUESTIONS?

Reminder: Oral statements or discussion during the pre-bid meeting today will not be binding, nor will it change or affect the terms or conditions within the Plans and Specifications of this Project. Changes, if any, will be addressed in writing only via an Addendum.

BPC Sewershed Package 5 Pipe Burst & Open Cut Project



Multiple Sewershed Package 17B Project (CO-00442)



MAKING SAN ANTONIO
WATERFUL

